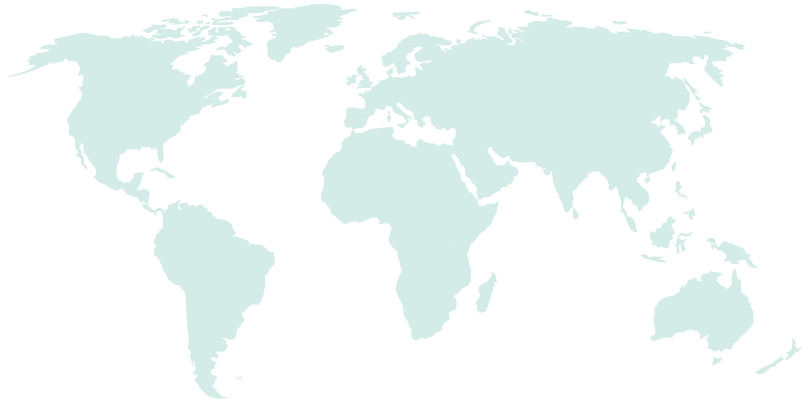


SUPERHAWK®



2021

**PREMIUM TYRE
MANUFACTURER**

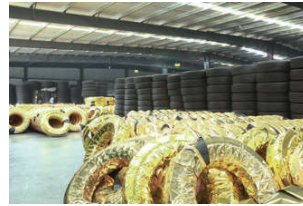
SINCE 1975



INTRODUCTION

Hawk Tyre International Ltd , a global tyre supplier integrating tyre research and development, production and marketing,now mainly deals with four segments including tractor and trailer tyres, OTR tyres,agricultural tyres and industrial tyres. Relying on over 40 years of tyre manufacturing experience and market accumulation, Hawk Tyre products feature high loading capacity,super wear-resistance,and great adaptation to complex road conditions. Credited with ISO9001, CCC, DOT, ECE, SMARTWAY, GCC, SNI and other international certifications, the company's brands "HAWKWAY" "SUPERHAWK" "YINGBA" "MARVEMAX" are distributed to more than 80 countries in Southeast Asia, America, Australia and Africa etc, and all received with positive feedback by global partners.

Look forward to the future, Hawk Tyre will continue to improve the user experience towards the product and focus on providing all partners with full range customized services including professional pre-sales training,tracking guidance and advertisement support, after-sales assistance to solve problems. To achieve customer's satisfaction is our pursuit.



SIZE	PATTERN									
11.00R20	HK710	HK808	HK750	HK750+	HK707	HK707+	HK852			
12.00R20	HK710	HK808	HK853+	HK750	HK750+	HK707	HK707+	HK852		
12.00R24	HK707	HK808								
295/80R22.5	HK810	HK859	HK862	SLS1						
315/80R22.5	HK810	HK859	HK862							
11R22.5	HK810	HK859	HK863	HK865	HK869					
295/75R22.5	HK865	HK869								
12R22.5	HK810	HK863	HK865							

SLS1



Performance Description:

- Super Wide and Extremely wear-resistant. Only fit for tractor and trailer.
- Special designed for long haul. Perform well on good road condition high speed.
- Contact Area 10% bigger than regular design.
- Larger footprint for drive comfort and long tread wear.
- Strong bead structure insures longer endurance and lifespan.

TYRE SIZE	PLY RATING	TREAD DEPTH (mm)	STANDARD RIM	TUBE TYPE	LOAD INDEX	SPEED SYMBOL	OVERALL DIAMETER (mm)	SECTION WIDTH (mm)	INFLATION PRESSURE (kpa)		LOAD CAPACITY (kg)	
									SINGLE	DUAL	SINGLE	DUAL
295/80R22.5	18PR	16.0	9.00	TL	152/149	M	1044	298	900	900	3550	3250

HK707/HK707+



Performance Description:

- Super Wide and Extremely wear-resistant.
- Applied for short-haul, low speed, and heavy load. Only fit for tractor and trailer and mine truck.
- Excellent stab-resistance, anti-eccentric worn, avulsion resistance and tread wear ability.
- Aggressive lug pattern design provides excellent grip and traction performance.

TYRE SIZE	PLY RATING	TREAD DEPTH (mm)	STANDARD RIM	TUBE TYPE	LOAD INDEX	SPEED SYMBOL	OVERALL DIAMETER (mm)	SECTION WIDTH (mm)	INFLATION PRESSURE (kpa)		LOAD CAPACITY (kg)	
									SINGLE	DUAL	SINGLE	DUAL
11.00R20	18PR	25.0	8.00	TT	152/149	B	1085	295	930	930	3550	3250
12.00R20	20PR	25.0	8.50	TT	156/153	B	1125	315	900	900	4000	3650

HK808



Performance Description:

- Applied for bad road conditions including mining application of heavy duty workloads, only fit for tractor and trailer and mine truck.
- Large lug pattern design provides excellent grip performance. Wear-resistant compound design provide super tread life.
- Excellent stab-resistance, anti-eccentric worn, avulsion resistance and tread wear ability.

TYRE SIZE	PLY RATING	TREAD DEPTH (mm)	STANDARD RIM	TUBE TYPE	LOAD INDEX	SPEED SYMBOL	OVERALL DIAMETER (mm)	SECTION WIDTH (mm)	INFLATION PRESSURE (kpa)		LOAD CAPACITY (kg)	
									SINGLE	DUAL	SINGLE	DUAL
11.00R20	18PR	24.0	8.00	TT	152/149	B	1093	288	930	930	3550	3250
12.00R20	20PR	24.0	8.50	TT	156/153	B	1131	311	900	900	4000	3650
12.00R24	20PR	25.0	8.50	TT	160/157	B	1228	312	900	900	4500	4125

HK810/ HK710



Performance Description:

- Applied for short-haul, low speed, and heavy load. Only fit for tractor and trailer.
- Special tread compound with high wear-resistance, suitable for mining application and construction sites.
- Aggressive lug pattern design provides excellent grip and traction performance.

TYRE SIZE	PLY RATING	TREAD DEPTH (mm)	STANDARD RIM	TUBE TYPE	LOAD INDEX	SPEED SYMBOL	OVERALL DIAMETER (mm)	SECTION WIDTH (mm)	INFLATION PRESSURE (kpa)		LOAD CAPACITY (kg)	
									SINGLE	DUAL	SINGLE	DUAL
11R22.5	16PR 18PR	24.5	8.25	TL	146/143 148/145	G	1054	279	830	830	3000 3150	2725 2900
12R22.5	18PR	24.0	9.00	TL	152/149	L	1085	300	900	900	3550	3250
295/80R22.5	18PR	21.0	9.00	TL	152/149	L	1044	298	900	900	3550	3250
315/80R22.5	22PR	25.0	9.00	TL	167/164	D	1100	312	950	950	5450	5000
11.00R20	18PR	25.0	8.00	TT	152/149	B	1085	295	930	930	3550	3250
12.00R20	20PR	25.5	8.50	TT	158/155	B	1125	315	970	970	4250	3875

HK852



Performance Description:

- Applicable for drive axle on unpaved road, only fit for tractor and trailer.
- Robust tread block provides outstanding traction on and mud road surface.
- Special groove design with stone ejector prevent from stone penetration.
- Durable tyre carcass and improved tread compound help to resist.

TYRE SIZE	PLY RATING	TREAD DEPTH (mm)	STANDARD RIM	TUBE TYPE	LOAD INDEX	SPEED SYMBOL	OVERALL DIAMETER (mm)	SECTION WIDTH (mm)	INFLATION PRESSURE (kpa)		LOAD CAPACITY (kg)	
									SINGLE	DUAL	SINGLE	DUAL
11.00R20	18PR	18.5	8.00	TT	152/149	K	1085	293	930	930	3550	3250
12.00R20	20PR	18.5	8.50	TT	156/153	K	1125	315	900	900	4000	3650

HK750/HK750+



Performance Description:

- Super Wide and Extremely wear-resistant, only fit for tractor and trailer.
- Applied for short-haul, low speed, and heavy load.
- Special tread compound with high wear-resistant, suitable for mining application and construction sites.
- Aggressive block pattern design provides excellent grip and traction performance.

TYRE SIZE	PLY RATING	TREAD DEPTH (mm)	STANDARD RIM	TUBE TYPE	LOAD INDEX	SPEED SYMBOL	OVERALL DIAMETER (mm)	SECTION WIDTH (mm)	INFLATION PRESSURE (kpa)		LOAD CAPACITY (kg)	
									SINGLE	DUAL	SINGLE	DUAL
11.00R20	18PR	19.0	8.00	TT	152/149	K	1085	293	930	930	3550	3250
12.00R20	20PR	18.5	8.50	TT	156/153	K	1125	315	900	900	4000	3650

HK853+



Performance Description:

- Super Wide and Extremely wear-resistant.
- Applied for short-haul, low speed, and heavy load, only fit for tractor and trailer.
- Special tread compound with high wear-resistant, suitable for mining application and construction sites.
- Aggressive block pattern design provides excellent grip and traction performance.

TYRE SIZE	PLY RATING	TREAD DEPTH (mm)	STANDARD RIM	TUBE TYPE	LOAD INDEX	SPEED SYMBOL	OVERALL DIAMETER (mm)	SECTION WIDTH (mm)	INFLATION PRESSURE (kpa)		LOAD CAPACITY (kg)	
									SINGLE	DUAL	SINGLE	DUAL
12.00R20	20PR	21.0	8.50	TT	156/153	K	1125	315	900	900	4000	3650

HK859



Performance Description:

- Open shoulder drive tire applied for highway urban and country road, drive position, only fit for tractor and trailer.
- Reinforced steel belt carcass enhances casing strength and maximizes load capacity.
- Special wear-resistant tread design of low heat build-up.

TYRE SIZE	PLY RATING	TREAD DEPTH (mm)	STANDARD RIM	TUBE TYPE	LOAD INDEX	SPEED SYMBOL	OVERALL DIAMETER (mm)	SECTION WIDTH (mm)	INFLATION PRESSURE (kpa)		LOAD CAPACITY (kg)	
									SINGLE	DUAL	SINGLE	DUAL
11R22.5	16PR	23.5	8.25	TL	146/143	M	1054	279	830	830	3000	2725
295/80R22.5	18PR	19.0	9.00	TL	152/149	L	1044	298	900	900	3550	3250
315/80R22.5	20PR 22PR	20.5	9.00	TL	156/150 167/164	L C	1076	312	850 950	850 950	4000 5450	3350 5000

HK862



Performance Description:

- Suitable for long journey, applied to steer wheels for highway and good road condition. Only fit for tractor and trailer.
- Unique tread design and compound for lower heat and lower rolling resistance and minimized gasoline consumption.
- Horizontal rib design offers the top guiding and stability at high speed service, which also provides the excellent stone ejection performance and super grip on wet road.

TYRE SIZE	PLY RATING	TREAD DEPTH (mm)	STANDARD RIM	TUBE TYPE	LOAD INDEX	SPEED SYMBOL	OVERALL DIAMETER (mm)	SECTION WIDTH (mm)	INFLATION PRESSURE (kpa)		LOAD CAPACITY (kg)	
									SINGLE	DUAL	SINGLE	DUAL
295/80R22.5	18PR	15.0	9.00	TL	152/149	M	1044	298	900	900	3550	3250
315/80R22.5	20PR	15.0	9.00	TL	156/150	L	1076	312	850	850	4000	3350

HK863



Performance Description:

- Mixed highway and freeway for long distance and national transportation service, high speed.
- Special tread compound offers excellent performance of lower heat build-up and cut resistance, super grip on wet road and improved riding comfort.
- Only fit for tractor and trailer.

TYRE SIZE	PLY RATING	TREAD DEPTH (mm)	STANDARD RIM	TUBE TYPE	LOAD INDEX	SPEED SYMBOL	OVERALL DIAMETER (mm)	SECTION WIDTH (mm)	INFLATION PRESSURE (kpa)		LOAD CAPACITY (kg)	
									SINGLE	DUAL	SINGLE	DUAL
11R22.5	16PR	15.0	8.25	TL	146/143	M	1054	279	830	830	3000	2725
12R22.5	18PR	15.0	9.00	TL	152/148	L	1095	300	850	850	3550	3150

HK865



Performance Description:

- Smartway certified eco friendly all position or steer tire for long haul. Only fit for tractor and trailer.
- Optimum tread design guarantees even wear in trailer axle positions.
- Rib stone rejecters preserve casing integrity.

TYRE SIZE	PLY RATING	TREAD DEPTH (mm)	STANDARD RIM	TUBE TYPE	LOAD INDEX	SPEED SYMBOL	OVERALL DIAMETER (mm)	SECTION WIDTH (mm)	INFLATION PRESSURE (kpa)		LOAD CAPACITY (kg)	
									SINGLE	DUAL	SINGLE	DUAL
11R22.5	16PR	15.0	8.25	TL	146/143	L	1095	279	830	830	3000	2725
295/75R22.5	16PR	15.0	9.00	TL	146/143	L	1014	298	830	830	3000	2725

HK869



Performance Description:

- Mixed highway and freeway, drive position heavy duty rib tyre for on/off highway application. Only fit for tractor and trailer.
- Special tread compound design for lower heat build-up, excellent puncture and cut resistance minimized gasoline consumption.
- Super steel belt carcass construction enhances casing strength and maximizes tyre load capacity.

TYRE SIZE	PLY RATING	TREAD DEPTH (mm)	STANDARD RIM	TUBE TYPE	LOAD INDEX	SPEED SYMBOL	OVERALL DIAMETER (mm)	SECTION WIDTH (mm)	INFLATION PRESSURE (kpa)		LOAD CAPACITY (kg)	
									SINGLE	DUAL	SINGLE	DUAL
11R22.5	16PR	21.0	8.25	TL	146/143	L	1065	279	830	830	3000	2725
295/75R22.5	16PR	22.0	8.25	TL	146/143	K	1020	298	830	830	3000	2725